

AMUSE-Virgo
AGN
Multi-wavelength
Survey
in Early type
galaxies



On the survival of super-massive
black holes in faint spheroids

Elena Gallo | UCSB

AMUSE: science goals

- ✓ Census of super-massive black hole (SMBH) activity in the local universe (Chandra+Spitzer+Hubble+VLA)
- ✓ SMBH occupation fraction/mechanical heating (Chandra+Spitzer+Hubble+VLA)
- ✓ X-ray luminosity function of globular clusters + Ultra-luminous X-ray sources in early type galaxies (Chandra+Hubble)
- ✓ Testing SMBH mass scaling relations at the low mass end (Hubble+Keck)

AMUSE: the survey

- ✓ Targets 100 early type galaxies which compose the HST ACS Virgo Cluster Survey (ACSVCS, Cote' et al 04)
 - 84 new targets with Chandra ACIS-S (454 ksec; PI: Treu) + 16 archival
 - 57 new targets with Spitzer MIPS (9.5 hr) + 43 archival
 - HST ACS archival data (100 orbits)
 - VLA, in progress (with D. Axon)
- ✓ AMUSE, the team: E. Gallo, T. Treu, J.-H. Woo, J. Jacob, R. Antonucci, P. Marshall, L. Bildsten, C. Liepski (UCSB)
<http://tartufo.physics.ucsb.edu/~amuse/>

Science background

The quest for SMBHs:

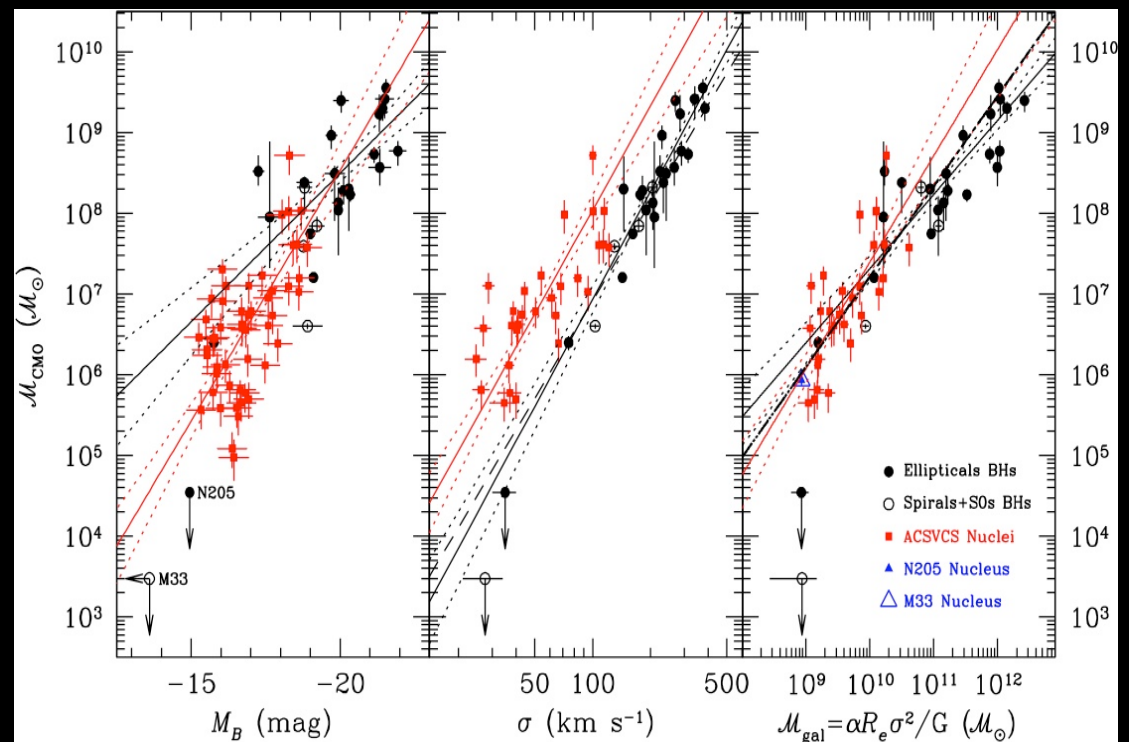
- ✓ prolonged periods of low-level SMBH activity *needed* in order to reproduce the galaxies' colors ('radio mode', Croton et al. 06).

Do SMBH *exist* in faint early types?

- ✓ SMBH/active stellar nuclei competition at B mag fainter than -20 (Ferrarese et al. 06)
- ✓ Low BH occupation fraction (Volonteri et al. 07)

Scaling relations: SMBH in faint spheroids

- ✓ SMBHs replaced by 'compact stellar nuclei' moving down the mass function. SMBHs:
 - Dominate B mag < -20
 - Disappear B mag > -18
 - Coexist in between



Ferrarese et al. 2006

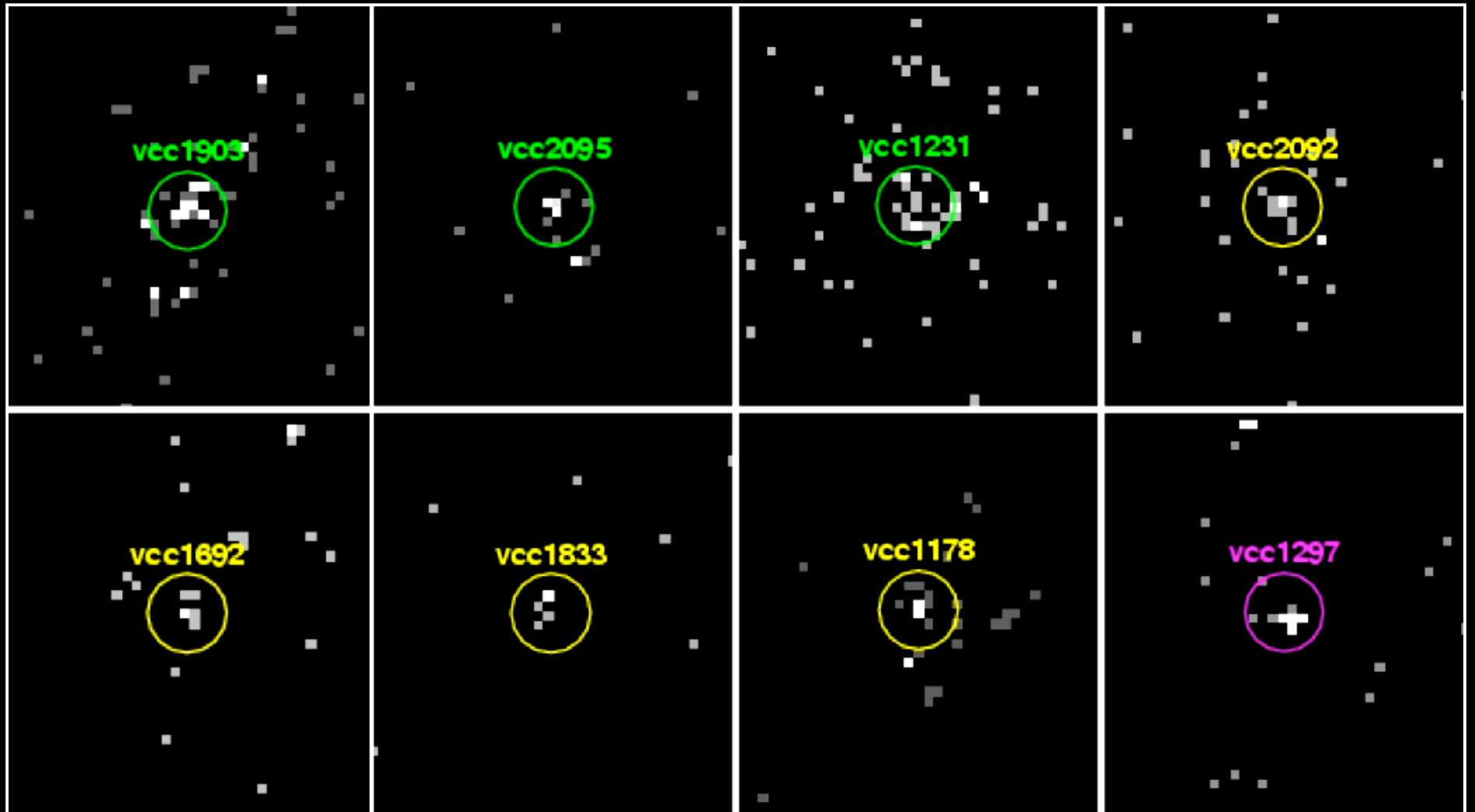
AMUSE: first Chandra results I.

- ✓ Search for accretion-powered activity from SMBH:
 - improve astrometry (match to SDSS-DR5)
 - separate hot gas from low mass X-ray binaries (LMXBs)
 - search for point like nuclear X-ray source
- ✓ Contamination:
 - CXB: negligible ($<1e-7$ sources, Chandra DF South, Rosati et al 02)
 - LMXBs ($<1e-2$ sources within the Chandra PSF , luminosity function, Gilfanov 03)

AMUSE: first Chandra results II.

- ✓ 32 galaxies: 16 archival (>500 ksec), 16 new (5.4 ksec each: sensitive to L_{Edd} for a $3 M_{\text{Sun}}$ object)
- ✓ Point-like nuclear X-ray source detected in 16 objects:
 - 4/16 belong to the new 5.4 ksec obs. Of the remaining 12 (archival data):
 - 9/12 already reported in the literature

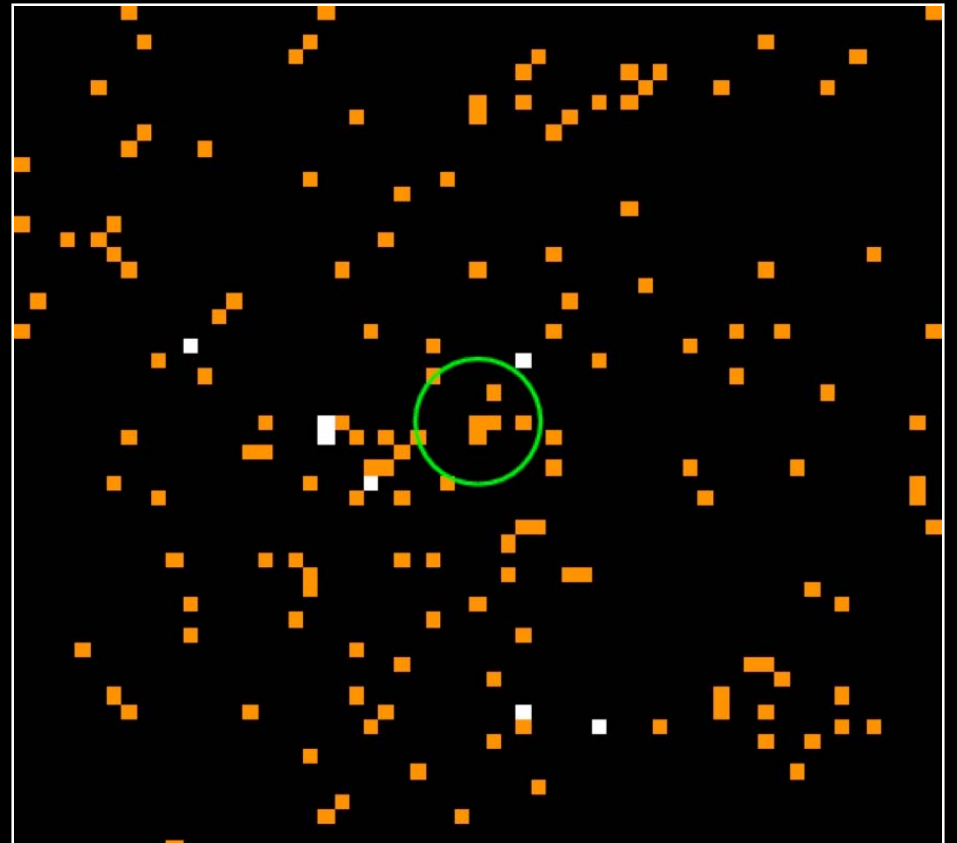
Nuclear SMBHs



Chandra ACIS-S

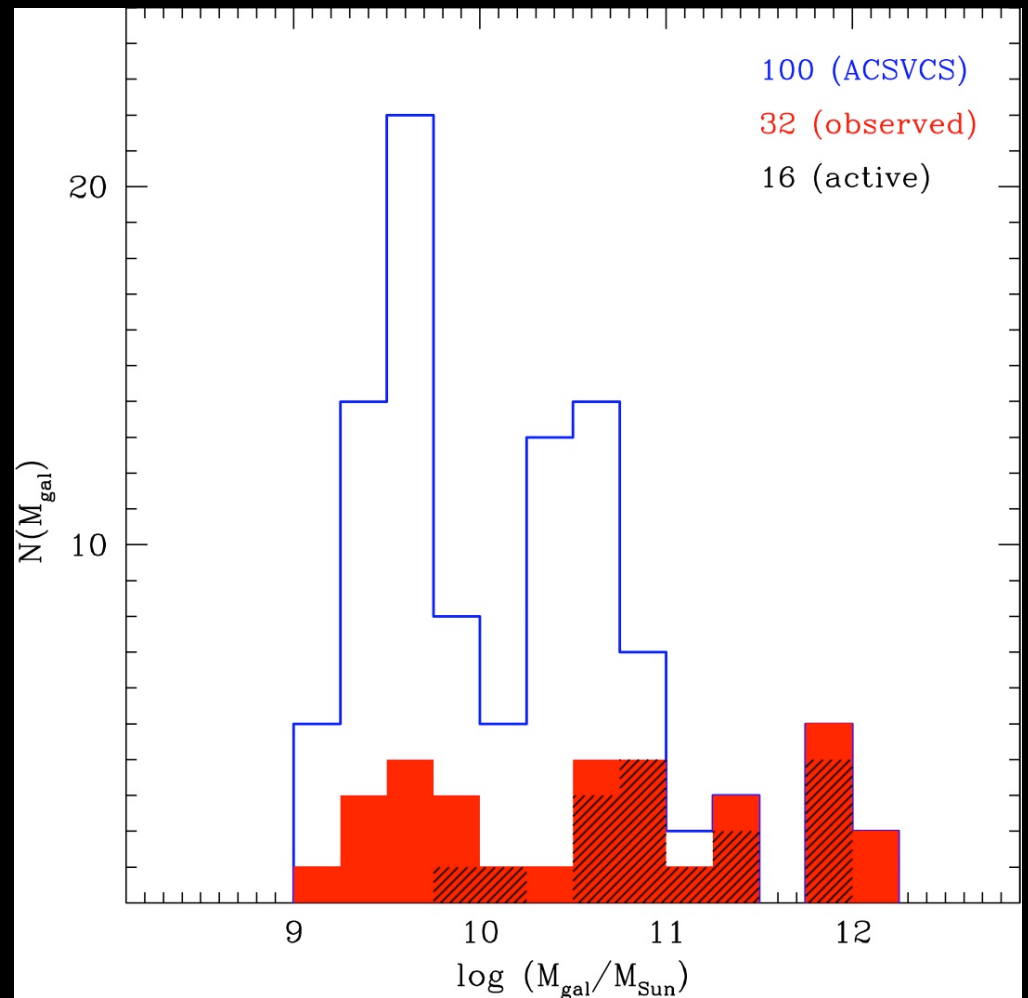
Non detections: stacking

- ✓ 12 snapshot observations, 62.3 ksec net exposure
- ✓ $L_X < 3.8e37$ erg/sec
(average distance 16.5 Mpc)
- ✓ $L_X/L_{Edd} < 3e-8$
(average $M_{BH} = 9.3e6 M_{Sun}$)



AMUSE: SMBH survival

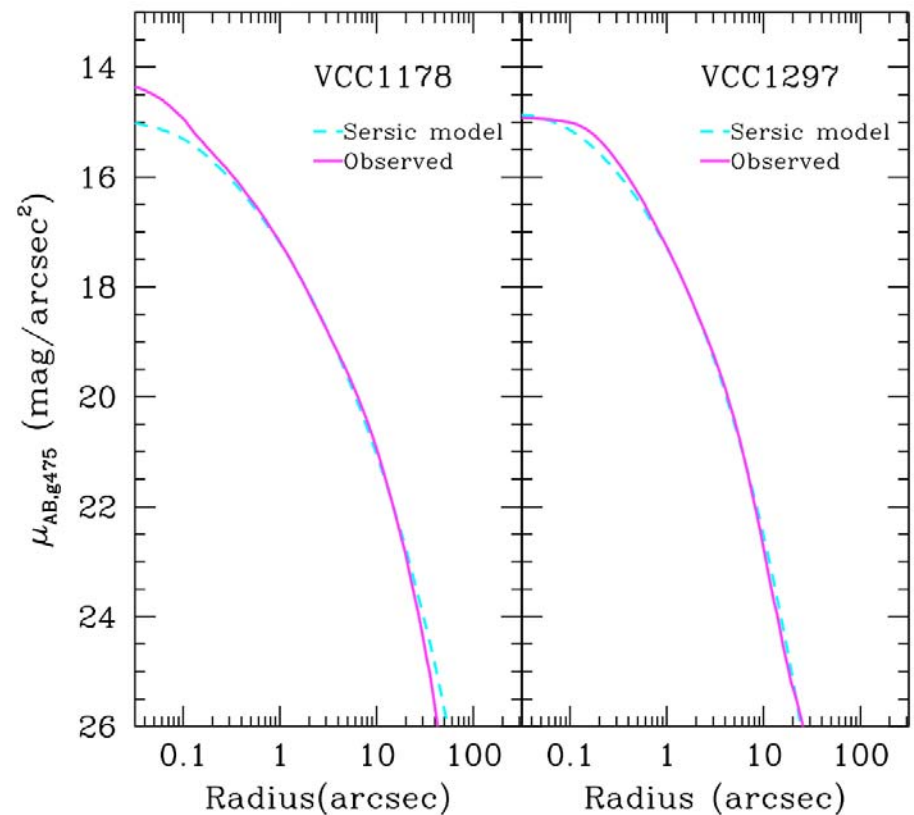
- ✓ 2 of the detected nuclei in galaxies with $B \text{ mag} > -18$:
vcc1178: $M^* = 1.4e10 M_{\text{Sun}}$
vcc1297: $M^* = 6.7e9 M_{\text{Sun}}$
- ✓ 15% of the targets with $\log(M^*/M_{\text{Sun}}) < 10.5$ harbor *active* SMBHs



AMUSE: SMBH vs compact stellar nuclei

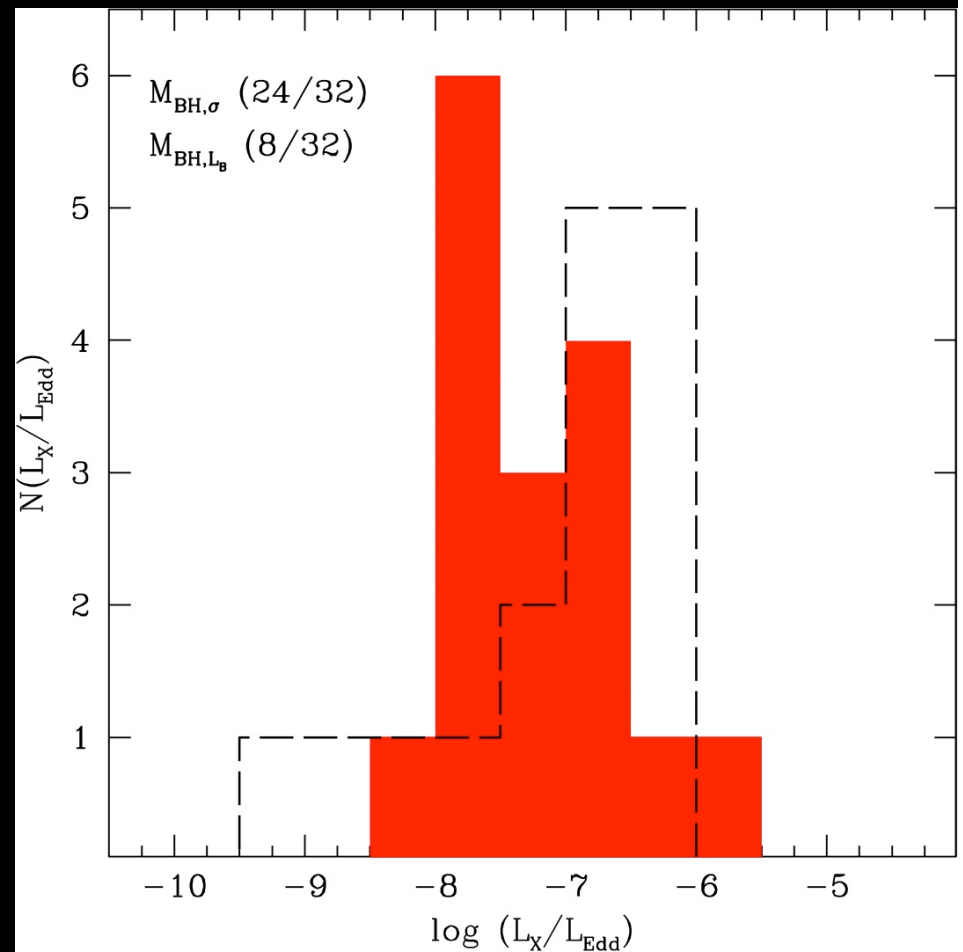
- ✓ 2 of the detected nuclei in galaxies with $B \text{ mag} > -18$:
vcc1178 also hosts a compact stellar nucleus
- ✓ 15% of the targets with $\log(M^*/M_{\text{Sun}}) < 10.5$ harbor *active* SMBHs

HST ACS - g band



Eddington ratio distribution

- ✓ For the 16 detected nuclei
 - $-8.4 < \log(L_X/L_{\text{Edd}}) < -5.8$
- ✓ Bolometric correction
 - $f_{\text{bol}} = 8-60$ (Marconi et al. 04)
- ✓ Mechanical SMBH feedback:
 - $-4.6 < \log(L_{\text{kin}} / L_{\text{Edd}}) < -3.3$
 - (applying Merloni & Heinz 07)



AMUSE-Virgo: first Chandra results

- ✓ Nuclear SMBH in 16/32 galaxies: $-8.4 < \log(L_X/L_{\text{Edd}}) < -5.8$
- ✓ L_{kin} in agreement with models for cosmic structure formation (AGN 'radio mode')
- ✓ Two of the detected nuclei hosted in galaxies with B mag > -18 .
SMBH and compact stellar nuclei are NOT mutually exclusive.
- ✓ SMBH occupation fraction $f > 15\%$ below $M^* = 10^{10.5} M_{\text{Sun}}$

Gallo et al., in prep.

see: <http://tartufo.physics.ucsb.edu/~amuse>